

RHODE ISLAND GOVERNOR'S
COMMISSION ON DISABILITIES
PRESENTS

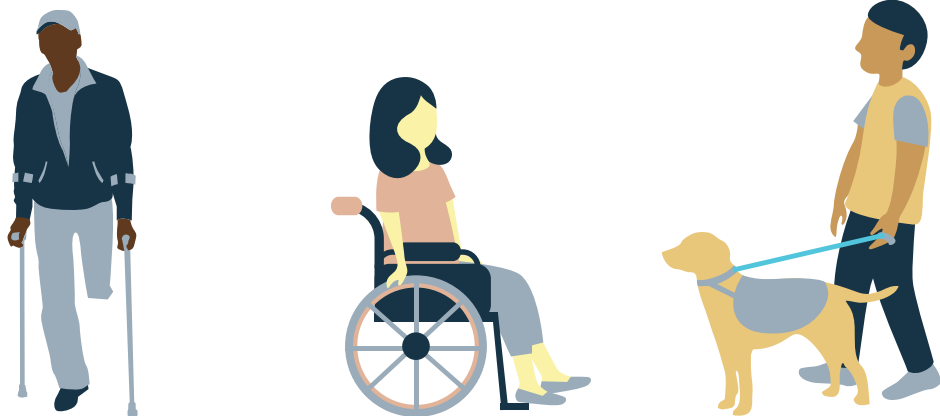
Public Forums to Identify the Concerns of People with Disabilities and Their Families

22-25 JULY, 2019



Table of Contents:

- 3** Event Introduction
- 4** Ways to Make Remarks, ASL, and CART Services
- 5** ADA Reservations with Rides
- 6** 2019 Public Forum Event Schedule
- 8** Remarkable Outcomes from Past Public Forums
- 10** Contact Information



EVENT INTRODUCTION

During the week of the 29th anniversary of the Americans with Disabilities Act (July 22-25), the Governor's Commission on Disabilities and many other states and non-profit agencies conduct a week-long series of open forums to hear concerns of people with disabilities and their families.



- The forums are open for all to come and speak.
- Representatives of the sponsoring agencies will be there to listen.
- Policy makers and planners want to hear your concerns about current services, unmet needs, and suggestions for improving services and expanding opportunities.

PUBLIC FORUMS

4

TO IDENTIFY THE CONCERNS OF PEOPLE WITH
DISABILITIES AND THEIR FAMILIES

Ways to make remarks:

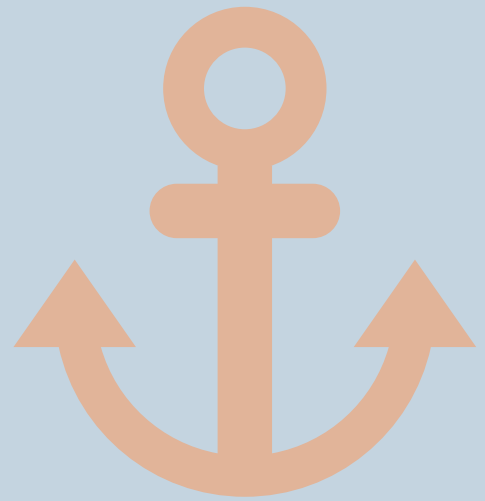
- In person at the forums
- Faxed to 462-0106
- Emailed to
GCD.Disabilities@gcd.ri.gov
- Mailed by August 8th to:

Governor's Commission on Disabilities

John O. Pastore Center

41 Cherry Dale Ct

Cranston, RI 02920



CART Recorders (real-time captioning) and assistive listening devices will be at all sites, courtesy of the Office of Rehabilitative Services/Assistive Technology Access Partnership.

PUBLIC FORUMS

TO IDENTIFY THE CONCERNS OF PEOPLE WITH
DISABILITIES AND THEIR FAMILIES

ADA Reservation with Rides

When making the ADA reservation with Rides to get to and from the public forum, tell the Rides reservationist (1-800-479-6902) that this trip is for the Governor's Commission's Public Forum in order to guarantee your return trip. After normal Rides hours of operation, ADA fare is still applicable.



When attending the forum, please wear unscented personal care products. Mild fragrances can constitute a toxic exposure for a person with an environmental illness.

PUBLIC FORUMS

6

TO IDENTIFY THE CONCERNS OF PEOPLE WITH
DISABILITIES AND THEIR FAMILIES



Schedule

TUESDAY, JULY 23RD

Peace Dale Public Library

1057 Kingstown Rd,

Wakefield, RI 02879

3:30-5:30 PM

WEDNESDAY, JULY 24TH

Warwick Public Library

Central Branch 600 Sandy Lane,

Warwick, RI 02886

3-5 PM

WEDNESDAY, JULY 24TH

Woonsocket Harris Public Library

303 Clinton St,

Woonsocket, RI 02895

5-7 PM



PUBLIC FORUMS

7

TO IDENTIFY THE CONCERNS OF PEOPLE WITH
DISABILITIES AND THEIR FAMILIES



Schedule

THURSDAY, JULY 25TH

Middletown Public Library

700 W. Main Road,
Middletown RI 02842

5:30-7:30 PM

WEDNESDAY, JULY 31ST

CCRI Liston Campus

1 Hilton Street,
Providence, RI 02905

3-5 PM

ADDITIONAL FORUMS:

Middletown

Bristol

Dates and Locations Coming Soon



REMARKABLE OUTCOMES FROM 8 PAST PUBLIC FORUMS

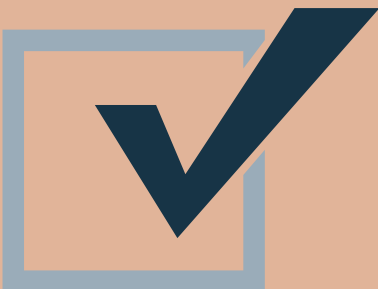
Creating a network of wheelchair accessible taxicabs, funded by the federal New Freedom Initiative



Providing a community living option to all persons who have a disability and are 65 years of age or younger in order to allow those individuals the choice to live in a less restrictive community-based environment or their own home environment

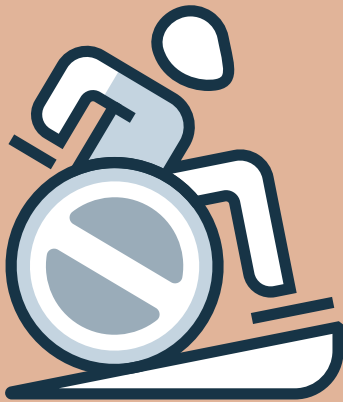
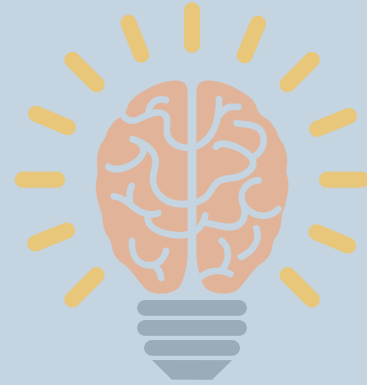


Authorizing the Secretary of State to utilize "state-of-the-art" voting technology to expand special ballot services to a wide range of voters with disabilities



REMARKABLE OUTCOMES FROM 9 PAST PUBLIC FORUMS

Funding comprehensive instate transitional services for individuals with traumatic brain injury



Requiring the installation of curb cuts and/or ramps at both ends of any pedestrian crosswalk

Establishing a Medicaid Buy-In Program for persons with disabilities who are eligible for Medicaid allowing them to return to work while retaining Medicaid coverage



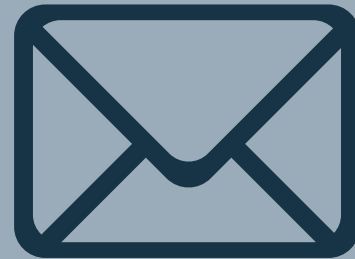
QUESTIONS? CONCERNS? 10

CONTACT US!

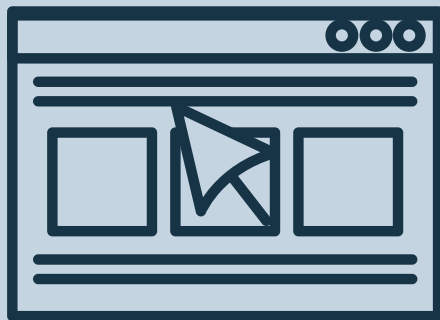
The Governor's Commission on Disabilities



41 Cherry Dale Court
Cranston, RI 02920



alyssa.gleason
@gcd.ri.gov



<http://www.gcd.ri.gov/>



401 462 0100