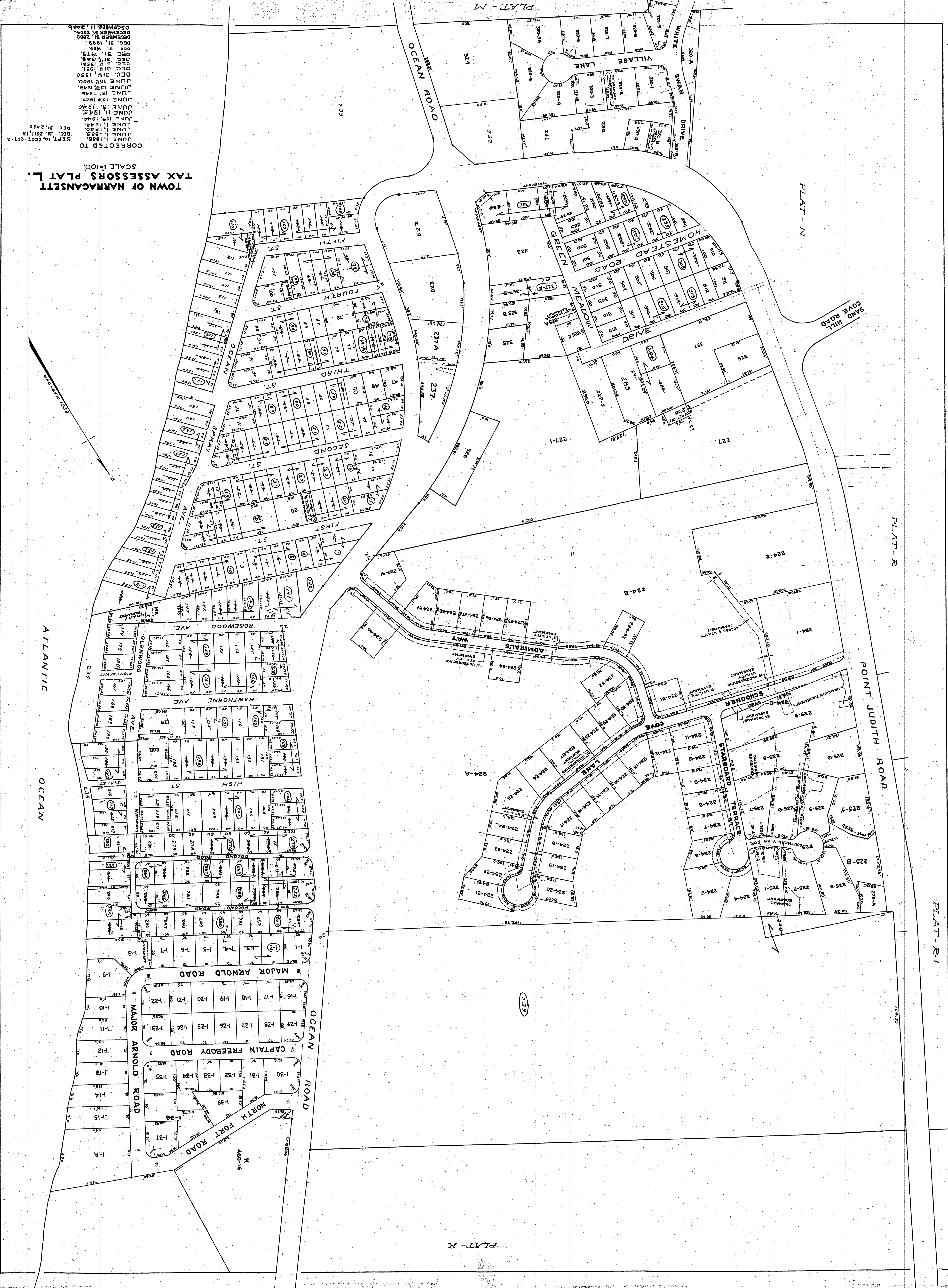


TOWN OF NARRAGANSETT  
TAX ASSESSORS PLAT L.

SCALE 1"=100'

CORRECTED TO  
JUNE 1, 1938.  
JUNE 1, 1940.  
JUNE 1, 1941.  
JUNE 1, 1942.  
JUNE 1, 1944.  
JUNE 15, 1946.  
JUNE 16, 1947.  
JUNE 17, 1948.  
JUNE 18, 1949.  
JUNE 19, 1950.  
DEC. 31, 1951.  
DEC. 31, 1952.  
DEC. 31, 1953.  
DEC. 31, 1954.  
DEC. 31, 1955.  
DEC. 31, 1956.  
DEC. 31, 1957.  
DEC. 31, 1958.  
DEC. 31, 1959.  
DEC. 31, 1960.  
DECEMBER 31, 2000.  
DECEMBER 31, 2004.  
CORRECTED TO  
SEPT. 10, 2007-2017.  
DEC. 31, 2020



PLAT-K

PLAT-R-1

PLAT-R

PLAT-N

PLAT-M