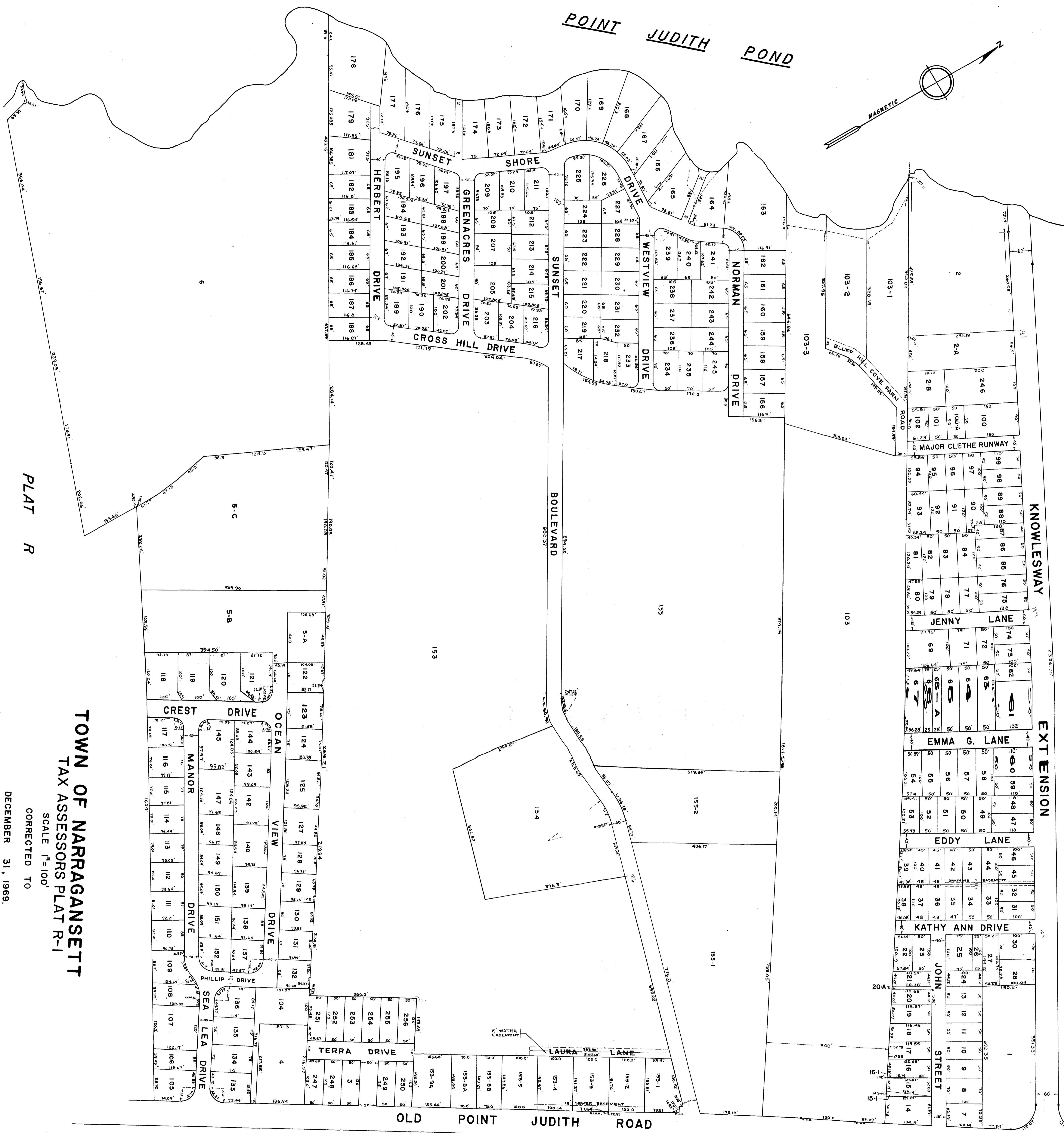
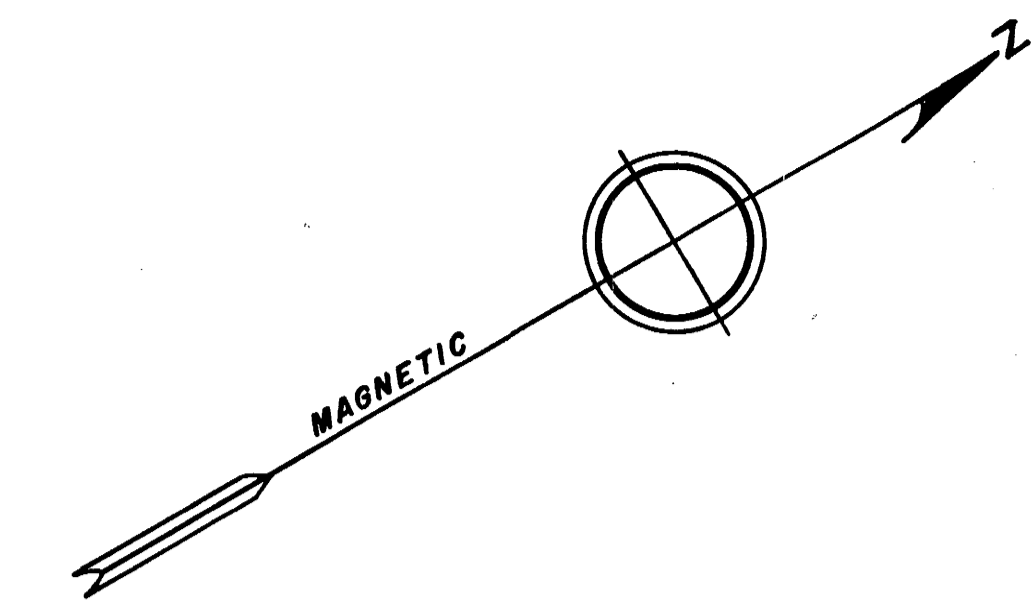


POINT JUDITH POND



PLAT R

TOWN OF NARRAGANSETT
TAX ASSESSORS PLAT R-1

CORRECTED TO
SCALE 1"=100'

- DECEMBER 31, 1969.
- DECEMBER 31, 1979.
- DECEMBER 31, 1989.
- DECEMBER 31, 1999.
- DECEMBER 31, 2004.

PLAT L

PLAT K

OLD POINT JUDITH ROAD